

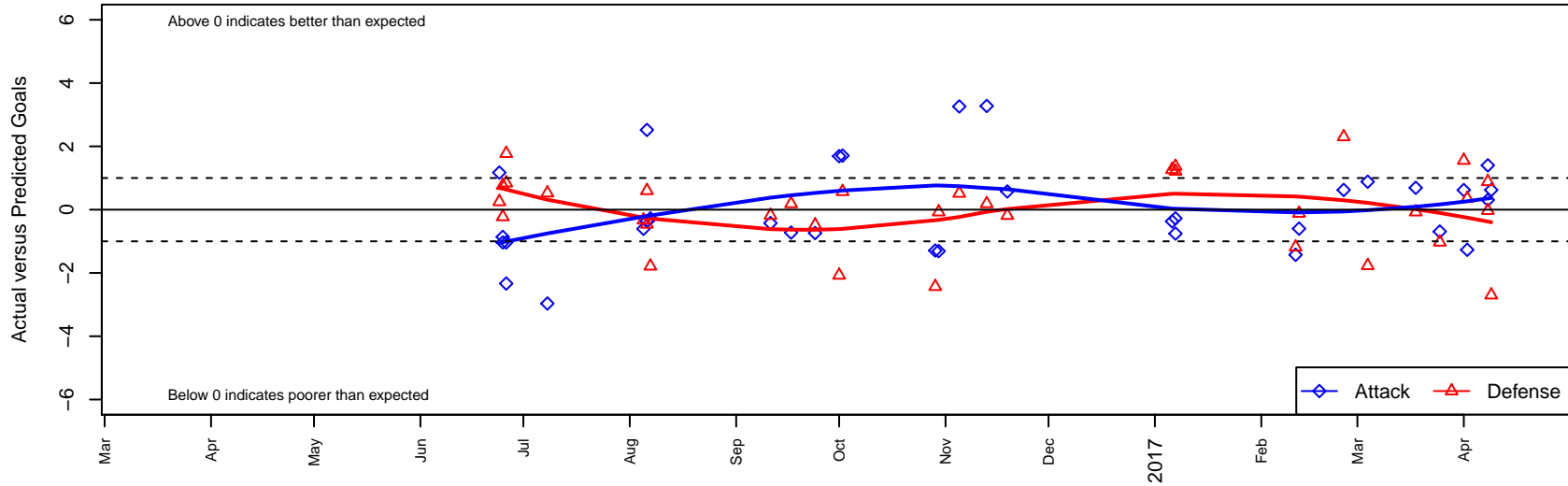
ISC Gunners B G04

Issaquah SC
 Issaquah, WA
 G04 total strength=985
 attack=1.94 defense=1.87
 fall league = PSPL Classic 1 U13
 spr league = Spr PSPL Classic 1 U13

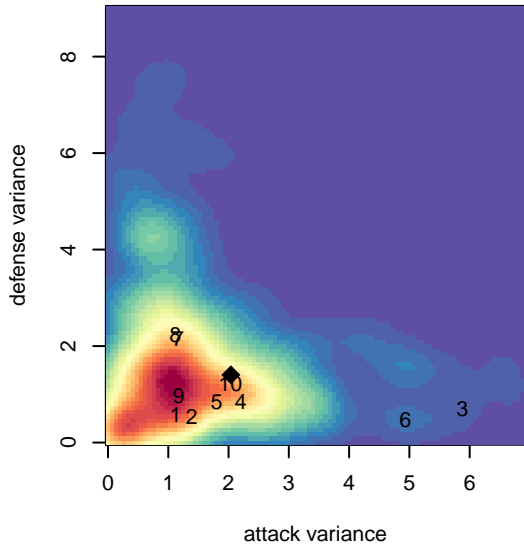
alt names used:
 ISC GUNNERS FC ISC GUNNERS G04 B (W/
 ISC GUNNERS FCISC GUNNERS G04 B
 ISC Gunners G04B
 ISC Gunners G04B
 ISC Gunners G04B
 ISC Gunners G04B
 ISC GUNNERS FC ISC GUNNERS G04 B (W/

Venues played:
 2016 Clash At the Border Div 2 Gold/Silver U13
 2016 Gunners Invitational 2004 Silver
 2016 WA Rush Cup G04 Silver U13
 2016 PSPL Classic 1 U13
 2016 PacNW Winter Classic Premier II U13
 2016 Spr PSPL Classic 1 U13
 2016 WA Cup U13 Silver U13

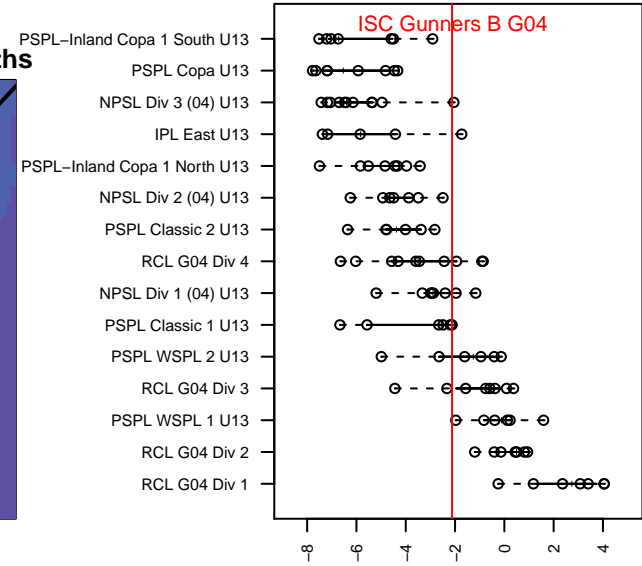
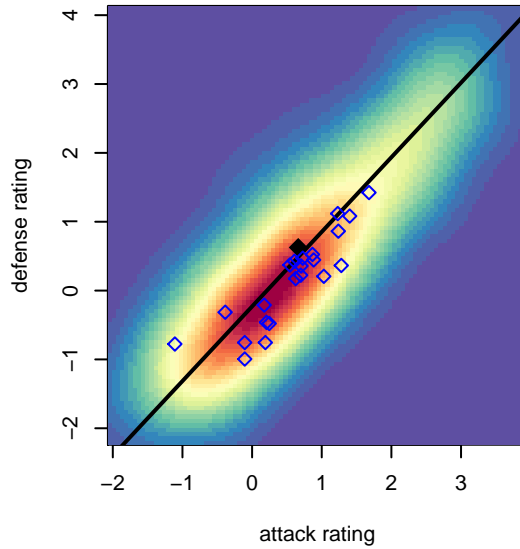
ISC Gunners B G04
 Dots are actual minus expected GF (blue circles) and GA (red triangles).
 Blue line is smoothed change in attack strength. Red is smoothed change in defense strength.



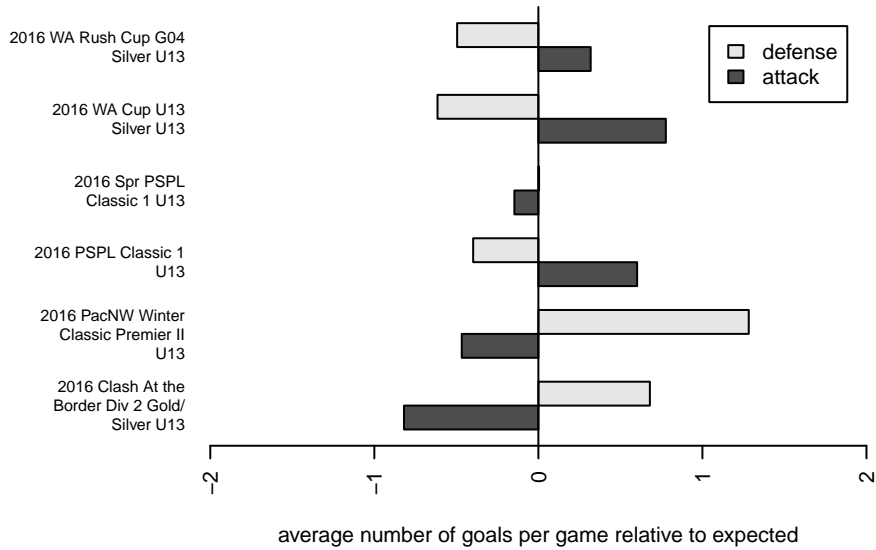
**attack and defense variance (black dot)
relative to other teams
and top 10 in region**



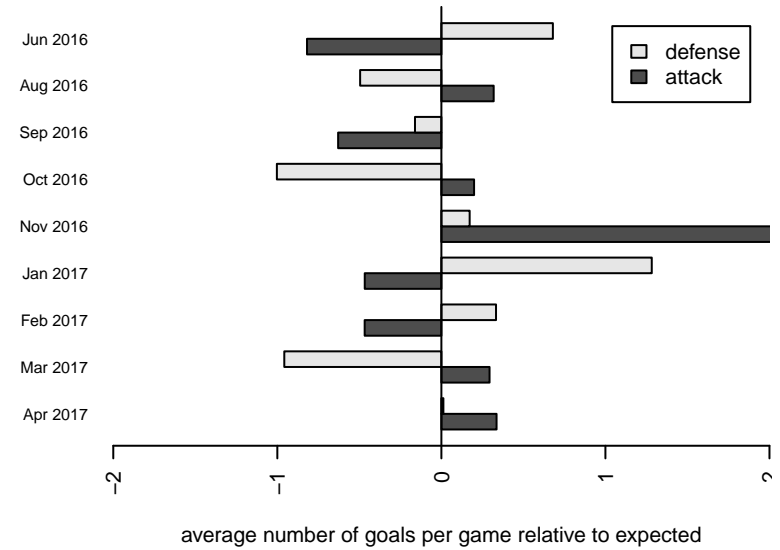
**attack and defense rating
relative to others at age
and all opponents in last 13 months**



Performance relative to 13 month average



Performance relative to 13 month average



| date | home | | away | | venue | pred.home | pred.away |
|-------------|---------------------------|---|---------------------------|---|------------------------------------------|------------------|------------------|
| 2017-04-09 | ISC Gunners B G04 | 1 | Seattle Celtic Green G04 | 5 | 2016 WA Cup U13 Silver U13 | 0.38 | 2.30 |
| 2017-04-08 | ISC Gunners B G04 | 2 | Emerald City FC Green G04 | 1 | 2016 WA Cup U13 Silver U13 | 1.69 | 0.97 |
| 2017-04-08 | RSA Elite Harris G04 | 0 | ISC Gunners B G04 | 3 | 2016 WA Cup U13 Silver U13 | 0.88 | 1.60 |
| 2017-04-02 | ISC Gunners B G04 | 1 | Wenatchee FC G04 | 0 | 2016 Spr PSPL Classic 1 U13 | 2.27 | 0.35 |
| 2017-04-01 | ISC Gunners B G04 | 2 | CWSA Navy G04 | 0 | 2016 Spr PSPL Classic 1 U13 | 1.38 | 1.55 |
| 2017-03-25 | ISC Gunners B G04 | 1 | Emerald City FC Green G04 | 2 | 2016 Spr PSPL Classic 1 U13 | 1.69 | 0.97 |
| 2017-03-18 | Breakers Black Lewis G04 | 1 | ISC Gunners B G04 | 2 | 2016 Spr PSPL Classic 1 U13 | 0.93 | 1.31 |
| 2017-03-04 | Highline Premier Blue G04 | 3 | ISC Gunners B G04 | 2 | 2016 Spr PSPL Classic 1 U13 | 1.23 | 1.12 |
| 2017-02-25 | Seattle Celtic Green G04 | 0 | ISC Gunners B G04 | 1 | 2016 Spr PSPL Classic 1 U13 | 2.30 | 0.38 |
| 2017-02-12 | RSA Elite Harris G04 | 1 | ISC Gunners B G04 | 1 | 2016 Spr PSPL Classic 1 U13 | 0.88 | 1.60 |
| 2017-02-11 | ISC Gunners B G04 | 0 | Cascade FC Green G04 | 2 | 2016 Spr PSPL Classic 1 U13 | 1.43 | 0.82 |
| 2017-01-07 | ISC Gunners B G04 | 0 | MRFC Blue G04 | 0 | 2016 PacNW Winter Classic Premier II U13 | 0.76 | 1.37 |
| 2017-01-07 | ISC Gunners B G04 | 1 | PacNW White G04 | 0 | 2016 PacNW Winter Classic Premier II U13 | 1.28 | 1.21 |
| 2017-01-06 | FWFC Blue G04 | 2 | ISC Gunners B G04 | 0 | 2016 PacNW Winter Classic Premier II U13 | 3.27 | 0.37 |
| 2016-11-19 | ISC Gunners B G04 | 2 | Cascade FC Green G04 | 1 | 2016 PSPL Classic 1 U13 | 1.43 | 0.82 |
| 2016-11-13 | Kent United Green G04 | 0 | ISC Gunners B G04 | 7 | 2016 PSPL Classic 1 U13 | 0.19 | 3.72 |
| 2016-11-05 | ISC Gunners B G04 | 8 | FPSC Fury White G04 | 0 | 2016 PSPL Classic 1 U13 | 4.74 | 0.51 |
| 2016-10-30 | Breakers Black Lewis G04 | 1 | ISC Gunners B G04 | 0 | 2016 PSPL Classic 1 U13 | 0.93 | 1.31 |
| 2016-10-29 | WA East G04 | 4 | ISC Gunners B G04 | 0 | 2016 PSPL Classic 1 U13 | 1.57 | 1.29 |
| 2016-10-02 | ISC Gunners B G04 | 3 | WA East G04 | 1 | 2016 PSPL Classic 1 U13 | 1.29 | 1.57 |
| 2016-10-01 | ISC Gunners B G04 | 3 | Breakers Black Lewis G04 | 3 | 2016 PSPL Classic 1 U13 | 1.31 | 0.93 |
| 2016-09-24 | FPSC Fury White G04 | 1 | ISC Gunners B G04 | 4 | 2016 PSPL Classic 1 U13 | 0.51 | 4.74 |
| 2016-09-17 | ISC Gunners B G04 | 3 | Kent United Green G04 | 0 | 2016 PSPL Classic 1 U13 | 3.72 | 0.19 |
| 2016-09-11 | Cascade FC Green G04 | 1 | ISC Gunners B G04 | 1 | 2016 PSPL Classic 1 U13 | 0.82 | 1.43 |
| 2016-08-07 | ISC Gunners B G04 | 1 | PacNW White G04 | 3 | 2016 WA Rush Cup G04 Silver U13 | 1.28 | 1.21 |
| 2016-08-06 | PSA Force G04 | 1 | ISC Gunners B G04 | 3 | 2016 WA Rush Cup G04 Silver U13 | 0.54 | 3.36 |
| 2016-08-06 | Spokane Foxes Kropp G04 | 0 | ISC Gunners B G04 | 5 | 2016 WA Rush Cup G04 Silver U13 | 0.60 | 2.48 |
| 2016-08-05 | ISC Gunners B G04 | 0 | GS Surf B G04 | 2 | 2016 WA Rush Cup G04 Silver U13 | 0.61 | 1.67 |

| date | home | | away | | venue | pred.home | pred.away |
|-------------|------------------------------------|---|-----------------------------------|---|------------------------------------------|------------------|------------------|
| 6-07-08 | NPSA Titans Navy Mercer Island G04 | 0 | ISC Gunners B G04 | 1 | 2016 Gunners Invitational 2004 Silver | 0.53 | 3.97 |
| 6-06-26 | Pacific FC Power G04 | 0 | ISC Gunners B G04 | 0 | 2016 Clash At the Border Div 2 Gold/Silv | 0.84 | 2.34 |
| 6-06-26 | ISC Gunners B G04 | 0 | FC Salmon Creek Nemesis White G04 | 0 | 2016 Clash At the Border Div 2 Gold/Silv | 1.04 | 1.77 |
| 6-06-25 | Eastside Timbers Black G04 | 0 | ISC Gunners B G04 | 1 | 2016 Clash At the Border Div 2 Gold/Silv | 0.76 | 1.86 |
| 6-06-25 | FC Salmon Creek Nemesis White G04 | 2 | ISC Gunners B G04 | 0 | 2016 Clash At the Border Div 2 Gold/Silv | 1.77 | 1.04 |
| 6-06-24 | ISC Gunners B G04 | 2 | Washington Timbers White 1 G04 | 1 | 2016 Clash At the Border Div 2 Gold/Silv | 0.83 | 1.25 |